

# FOR SALE: TURNKEY OUTDOOR STORAGE SITE

1041 CORPORATION PARKWAY | RALEIGH, NC 27610



.69 USABLE ACRES

\$795,000.00

DRONE VIDEO

Developed By: **BYRD-CANNON**

Contact for Details:



**BRAXTON ANTHONY, SIOR**

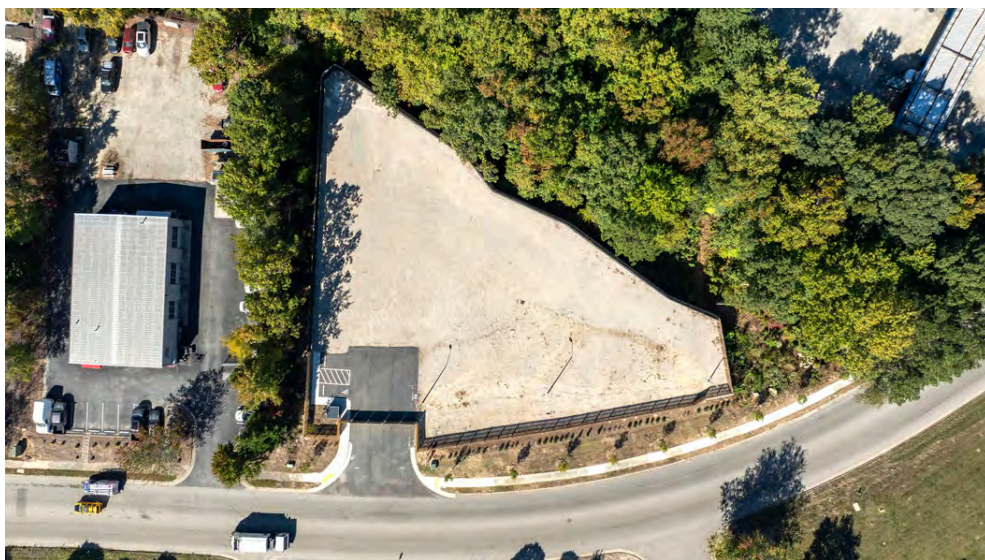
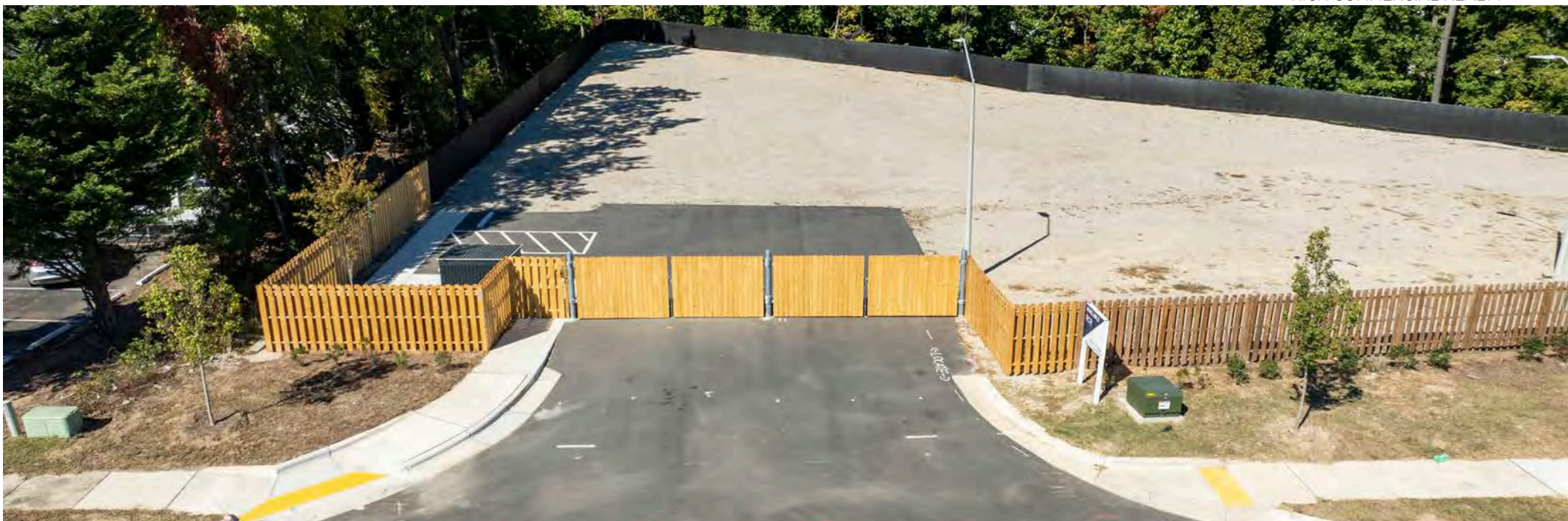
(919) 896-2145

[banthony@richcommercialrealty.com](mailto:banthony@richcommercialrealty.com)



**FOR SALE**

**1041 CORPORATION PARKWAY | RALEIGH, NC 27610**



### LOCATION INFORMATION

Street Address: 1041 Corporation Parkway

City, State, Zip: Raleigh, NC 27610

County: Wake

Market: Raleigh

Sub-Market: East Raleigh

### PROPERTY INFORMATION (CITY OF RALEIGH)

Property Type: Industrial

Zoning: IX-3

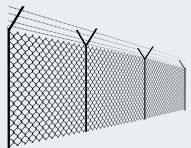
Parcel ID: 0243026

Land: 1.91 Acres



**FOR SALE**

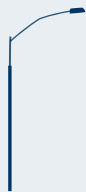
1041 CORPORATION PARKWAY | RALEIGH, NC 27610



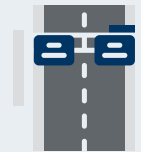
Secured



Outdoor  
Storage



New LED  
Light Fixtures



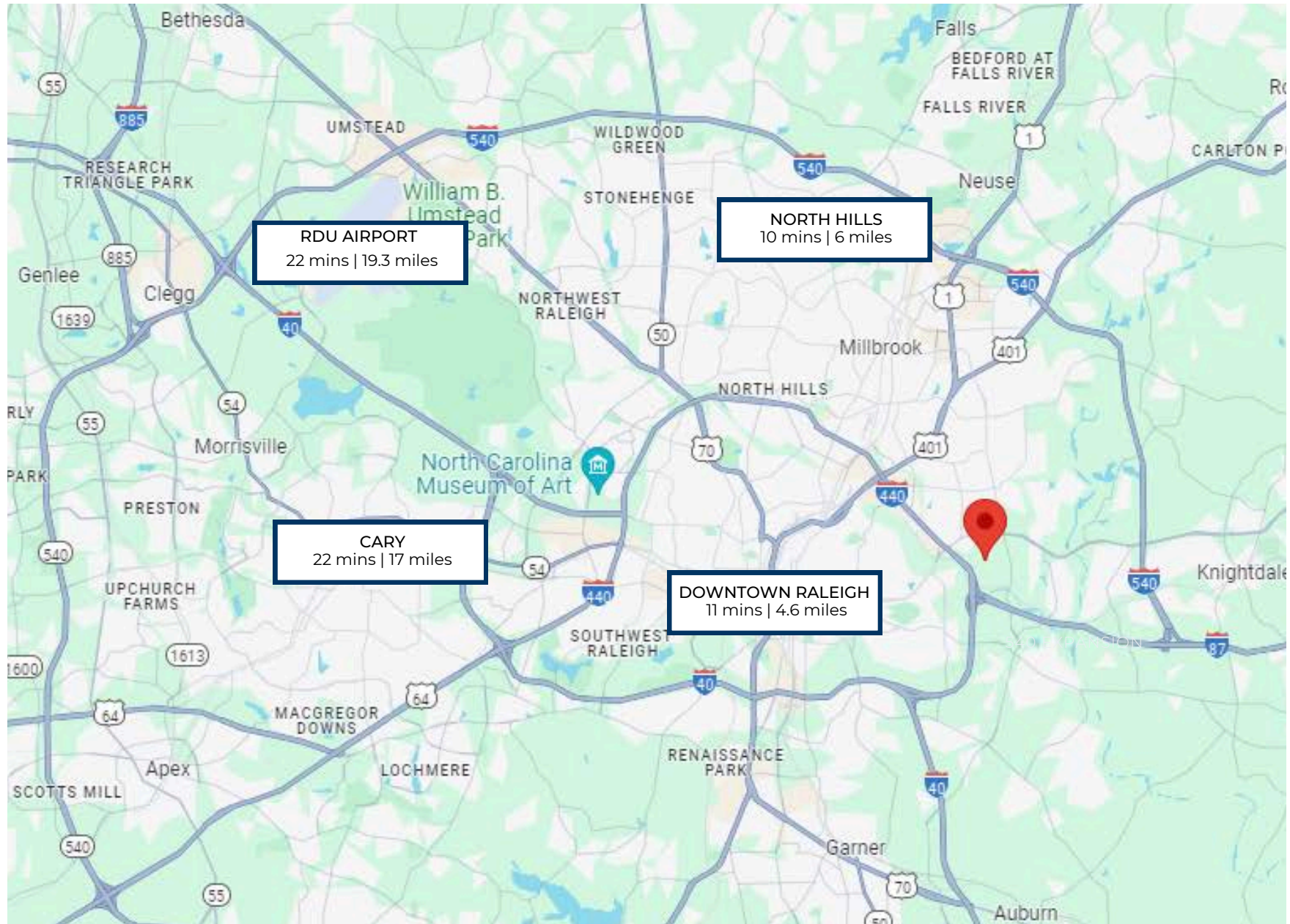
Easy Access  
To Major  
Highways

**PROPERTY  
HIGHLIGHTS**




**FOR SALE**

**1041 CORPORATION PARKWAY | RALEIGH, NC 27610**





 Downtown Raleigh



CORPORATION PARKWAY



COMMERCE PARK DRIVE







## **BRAXTON ANTHONY, SIOR**

Principal

(919) 896-2145

[banthony@richcommercialrealty.com](mailto:banthony@richcommercialrealty.com)



### **Call Our Office**

(919) 821-7880



### **Visit Our Website**

[www.richcommercialrealty.com](http://www.richcommercialrealty.com)



### **Follow RCR On LinkedIn**

<https://www.linkedin.com/company/2514132/admin/feed/posts/>



### **Office Address**

Rich Commercial Realty  
3840 Ed Drive, Suite 108  
Raleigh, NC 27612

DISCLAIMER: While we have made every attempt to ensure that the information contained herein is accurate, Rich Commercial Realty, LLC ("RCR") is not responsible for any errors or omissions, or for the results obtained from the use of this information. All information provided herein is provided with no guarantee of completeness, accuracy, or timeliness, and without warranty of any kind, express or implied, including, but not limited to warranties of performance, merchantability and fitness for a particular purpose. We strongly recommend you and/or your advisory team perform a thorough review of the included property to determine its compatibility with your real estate goals and specifications. In no event will RCR, its partners, agents, or employees be liable to you or anyone else for any decision made or action taken in reliance on the information herein.